

Instructions

Please read the following instructions carefully before using the product and keep them for future needs.

1. Usage and storage instructions

Do not expose the product to humid environments or extreme temperatures, it could be damaged. If water enters by accident, stop the operation to prevent a short circuit. Do not use our product more often or for a longer period than traditional cigarettes. Keep the product out of the reach of children, adolescents and pets.

2. Contraindications

When using liquids with and without nicotine: Please note the warnings and instructions for use of the liquid products and do not mix them with other substances. Do not use the product if you have a known problem with nicotine or other liquid ingredients. In case of nausea, dizziness or rash, discontinue use and consult a medic immediately. The electronic cigarette is not for smoking cessation.

3. Warnings

Delivery to and use by children and adolescents under the age of 18 is prohibited. The product is not recommended for non-smokers.

This product is not suitable for pregnant women, women who are breastfeeding, people with cardiovascular and respiratory diseases, alcoholics and epileptics. Do not use the product if you have lung disease (such as asthma, COPD, bronchitis, pneumonia). The released vapor may cause an asthma attack, shortness of breath and coughing fits in the case of a previously damaged lung. If complaints occur, please seek medical attention immediately. Do not use our product if you have a known problem (allergies, intolerances, etc.) with nicotine or other ingredients of our product. Since the product contains glycerol, it can lead to hyperglycaemia or glucosuria in diabetics.

When using nicotine-containing liquids: nicotine-containing products are not suitable for people who, for medical reasons, should abstain from nicotine products. If the liquid is swallowed, contact the emergency number. You can also contact the poison emergency service in your area.

4. Information on possible adverse health effects

- none known, see the instructions of the liquid.

5. Information on addictive effects

If you use products containing nicotine, the following warning is displayed on the packaging of the liquids: "This product contains nicotine: a substance that is highly addictive.

6. Information on toxicological data

Overheating the liquid (over 240 ° C) in the electronic cigarette may cause toxicological substances. Please use the electronic cigarette according to the manufacturer's recommendation and operating instructions. The use of this product is at your own risk.

7. Contact

If you need additional information or if you have questions about the products and their use, please contact our local shops or visit our website: www.smokerstore.de

Manufacturer:

SmokerStore GmbH,
Eisenwerkstraße 26,
58332 Schwelm, Deutschland
Email: info@smokerstore.de
Tel.: +49 (0)2336 / 935899-0
Fax: +49 (0)2336 / 4744870

1. PRODUCT DESCRIPTION

SCOPE OF DELIVERY

- 1x Taifun® BTD
- 1x mouthpiece
- 1x positive pole (dripper)
- 1x spare parts bag
- 1x user manual
- 1x card for authenticity verification



TECHNICAL SPECIFICATIONS

Dimensions:	22 x 26 mm	Weight:	~ 28 g
Thread:	510	Capacity:	-
Material:	Stainless steel (1.4301) / POM / PEEK / PEI		

2. SAFETY INSTRUCTIONS

- Do not expose the device to extreme temperatures; Avoid exposure to direct sunlight and high humidity.
- Do not use the device in an environment that is enriched with flammable gases, vapors or dusts; There is a danger of explosion!
- Do not drop, throw, or apply excessive force to the device to prevent damage; Do not use the device if you detect damage.
- Refill the liquid early to prevent dry hit.
- The device heats up during use; Give it time to cool down again.
- Change the cotton if you change the flavour.
- Clean the device regularly, as condensate and dirt may settle.
- Make sure that the mod that you use with the device is capable of performance; Use of unregulated mods or mods without protection is not recommended.

3. MANUFACTURER RECOMMENDATIONS

- The resistance of the used coil should not be less than 0.3 Ohms.
- Adjust the power of your mod to an appropriate level, depending on the used coil.

4. STORAGE INSTRUCTIONS

- If you don't use the device for an extended period of time, close the airflow control or empty the tank, remove the cotton and clean the device.
- Keep the device out of the reach of children and pets.
- Ensure that the device is firmly and securely in place.
- Store the device clean and dry; Avoid high humidity.
- Do not store the device under extreme temperatures; Avoid exposure to direct sunlight.

5. DISPOSAL NOTICE

- The packaging must be disposed of in an environmentally friendly manner.
- Products marked with the crossed out bin, do not belong in the trash. These products can be disposed of free of charge in your local trade or at community collection points. Check with your local council, town hall or local waste management company.

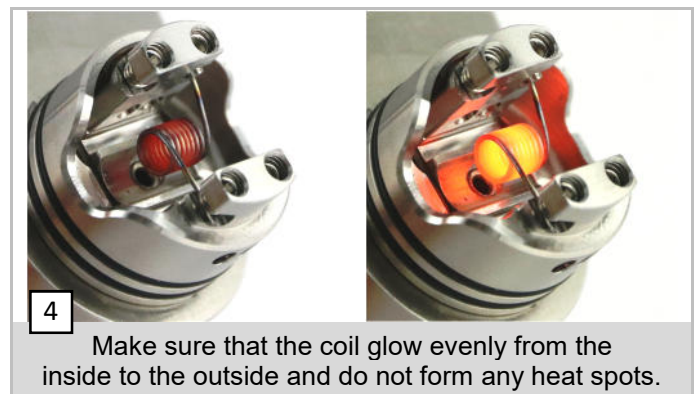
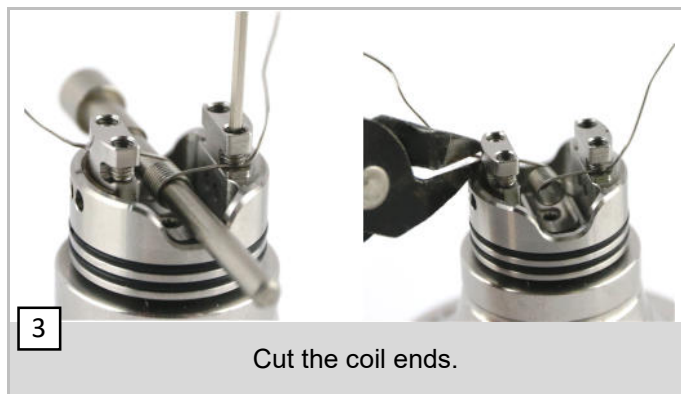
6. PRODUCT OVERVIEW

COMPONENT-OVERVIEW



7. START UP

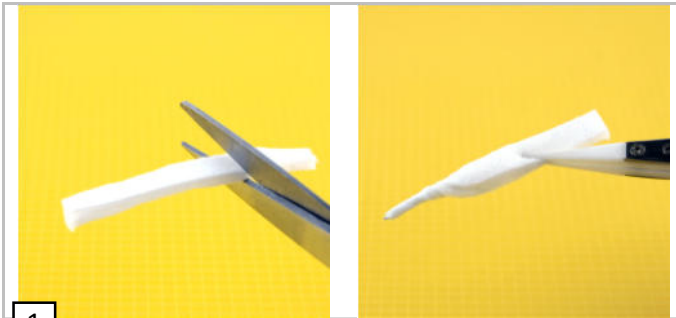
ATTACHING A COIL



! **WARNING**

- Use an ohm meter to check the resistance of the coil/device before using it. Don't use the device, if a short circuit is detected. This could lead to battery damage. Check if there is a contact between the coil ends and surrounding parts..
- Make sure the coil points down when installing. Otherwise, the coil can not be reached correctly by the airflow and is too close to the drip tip (danger of short circuit).

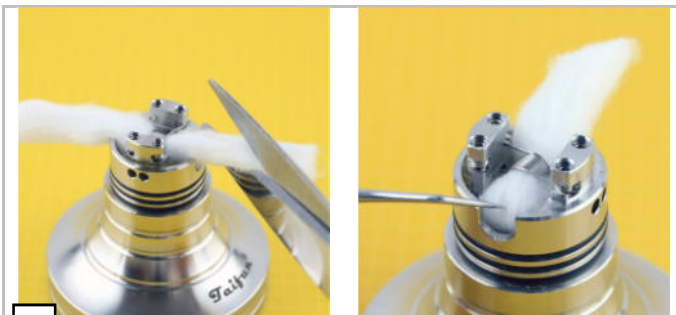
INSERT COTTON



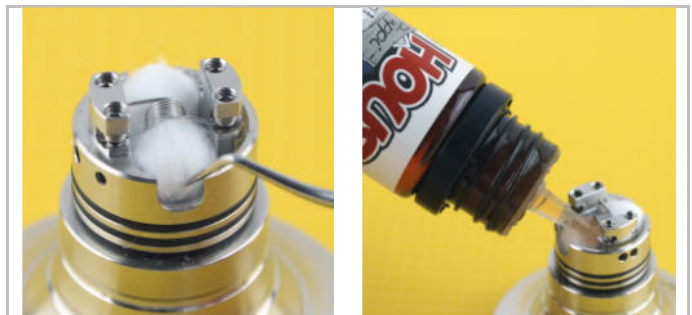
1 Cut a strip of cotton and sharpen it on the edge.



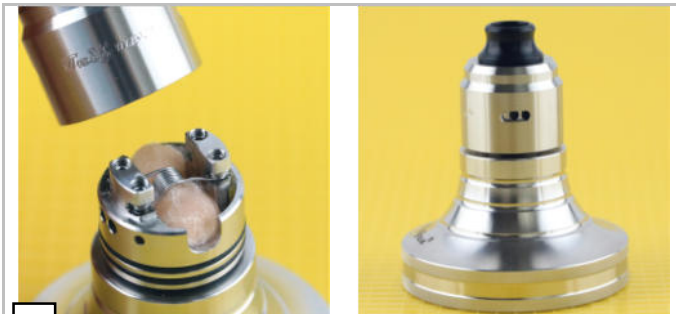
2 Pull the cotton through the coil, until both sides have the same length.



3 Shorten the cotton and turn the ends sideways. The ends of the cotton should touch the bottom slightly to be able to absorb the liquid. Then pre-moisten the cotton with liquid



PREPARATION AND ADJUSTMENT



1 Now, the top cap will be put on again.



2 A turn on the top cap regulates the airflow. By pressing the liquid container of the squonker box, the liquid is transported to the coil.

! **WARNING**

- Always make sure that the tank is filled sufficiently to avoid dry hit.
- Make sure that no liquid gets on your skin, otherwise wash these areas thoroughly.

ADJUST AIRFLOW CONTROL

By twisting the top cap opposite the base, one or two air holes (per side) are opened, depending on the position. This allows the airflow to be set individually. If the top cap is turned all the way to the left, the air supply is completely closed (eg for transport)



Turning to the left, until it stops, closes the airflow completely.



Turning to the middle position opens both air holes.



Turning to the right, until it stops, opens one of the air holes.



WARNING

- Never vape with completely closed airflow control.
- Make sure there is sufficient air supply at higher wattage levels.

USE OF AN ALTERNATIVE DRIP TIP

The drip tip of the Taifun® BTM can be exchanged for another standard drip tip. However, it is important that the connection of the Drip Tip is max. 5 mm long. Otherwise, it may happen that the drip tip jut out into the chamber and touches the coil. Especially with the use of metal drip tips, there is a risk of short circuit.

Therefore, make sure to install the coil pointing downwards.



The Drip Tip may not extend more than 5 mm into the top cap.



Please note this length when using other drip tips.



The coil has to be installed pointing downwards.

USE AS DRIPPER

The positive pole screw, which is installed in the Taifun® BTD, has a channel through which the liquid is led to the coil. Alternatively, this screw can also be replaced by a closed version (included in delivery). With this screw the Taifun® BTD can also be used as a regular dripper.

First, the positive pole screw is unscrewed. Now the positive pole in the inside gets loose. If necessary, hold it with one finger. Then the positive pole screw is replaced and screwed back in again. It fixes the positive pole inside. Make sure that the positive pole sits correctly in the insulator and is not bent or twisted.

When changing the positive pole screw, there should be no coil in the device.



8. CLEANING

Do not use cleaning agents as they could harm the o-rings.

Before assembling, check the completeness and positioning of the o-rings to prevent leakage of liquid.

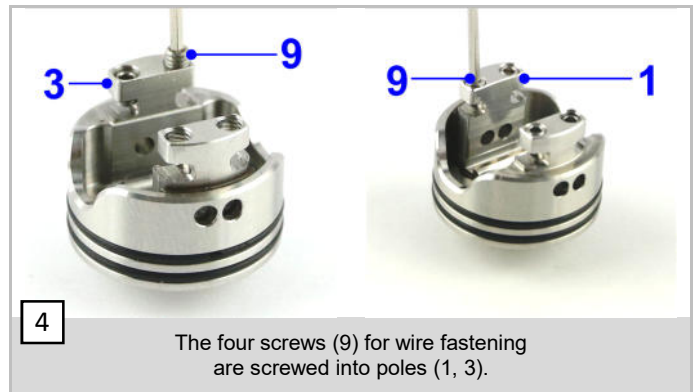
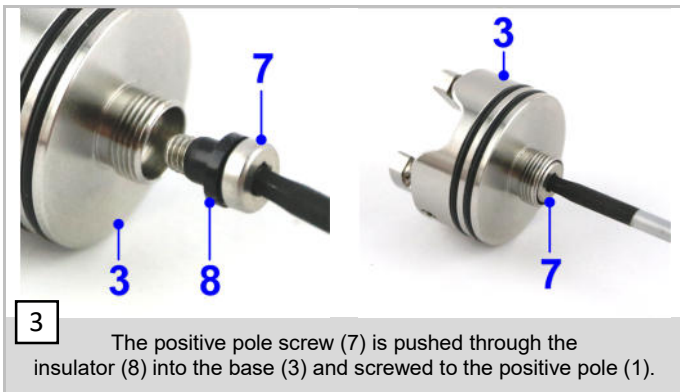
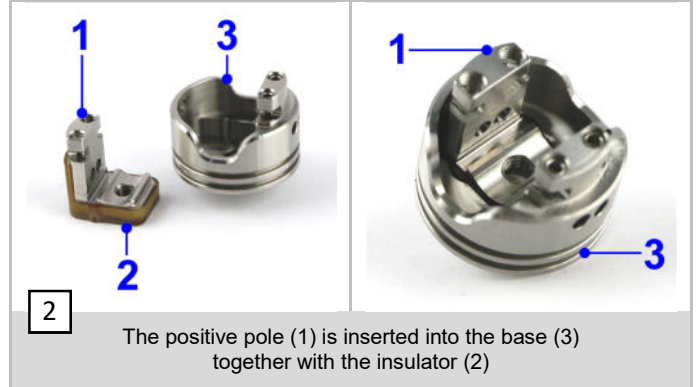
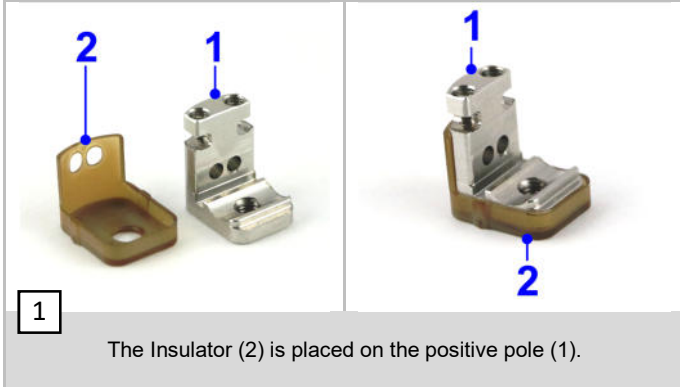
- Disassemble the device into its components.
- **Do not** remove the PEI insert in the top cap..
- Clean the components (not the cotton) with warm water or in an ultrasonic bath.
- Completely dry the components before reassembling the device.

9. MAINTENANCE

- Wait until the device has completely cooled down before disassembling, to prevent burns.
- Make sure that there is no power supply by unscrewing the device from the mod or by switching off the mod.

ASSEMBLING DEVICE

- The device is usually delivered fully assembled, the following instructions are for the assembly after cleaning.
- Moistening the sealing rings with liquid makes the assembly easier.



REPLACING SEALING RINGS

Sealing rings are used to seal the device.

- If you notice liquid or moisture leaking out of the device, the cause may be brittle seal rings that need to be replaced.
- Moistening the sealing rings with liquid makes the assembly easier.



IMPORTANT

- Inside the top cap is a PEI insert. Under no circumstances this should be removed, as otherwise there is a risk of a short circuit and the airflow control will be ruined.
- Even at an intensive cleaning of the device, the insert must remain in the top cap. For this reason, the insert is pressed firmly and accurately positioned.
- Should the insert be removed or damaged, please contact SmokerStore Customer Service.



INFORMATION

A more comprehensive user guide can be downloaded at www.smokerstore.de as PDF..