

## Instructions

Please read the following instructions carefully before using the product and keep them for future needs.

### 1. Usage and storage instructions

Do not expose the product to humid environments or extreme temperatures, it could be damaged. If water enters by accident, stop the operation to prevent a short circuit. Do not use our product more often or for a longer period than traditional cigarettes. Keep the product out of the reach of children, adolescents and pets.

### 2. Contraindications

When using liquids with and without nicotine: Please note the warnings and instructions for use of the liquid products and do not mix them with other substances. Do not use the product if you have a known problem with nicotine or other liquid ingredients. In case of nausea, dizziness or rash, discontinue use and consult a medic immediately. The electronic cigarette is not for smoking cessation.

### 3. Warnings

Delivery to and use by children and adolescents under the age of 18 is prohibited. The product is not recommended for non-smokers.

This product is not suitable for pregnant women, women who are breastfeeding, people with cardiovascular and respiratory diseases, alcoholics and epileptics. Do not use the product if you have lung disease (such as asthma, COPD, bronchitis, pneumonia). The released vapor may cause an asthma attack, shortness of breath and coughing fits in the case of a previously damaged lung. If complaints occur, please seek medical attention immediately. Do not use our product if you have a known problem (allergies, intolerances, etc.) with nicotine or other ingredients of our product.

When using nicotine-containing liquids: nicotine-containing products are not suitable for people who, for medical reasons, should abstain from nicotine products. If the liquid is swallowed, contact the emergency number. You can also contact the poison emergency service in your area.

### 4. Information on possible adverse health effects

- none known, see the instructions of the liquid.

### 5. Information on addictive effects

If you use products containing nicotine, the following warning is displayed on the packaging of the liquids: "This product contains nicotine: a substance that is highly addictive."

### 6. Information on toxicological data

Overheating the liquid (over 240 °C) in the electronic cigarette may cause toxicological substances. Please use the electronic cigarette according to the manufacturer's recommendation and operating instructions. The use of this product is at your own risk.

### 7. Contact

If you need additional information or if you have questions about the products and their use, please contact our local shops or visit our website: [www.smokerstore.de](http://www.smokerstore.de)



PDF instructions on website

#### Manufacturer:

SmokerStore GmbH,  
Eisenwerkstraße 26,  
58332 Schwelm, Deutschland  
Email: [info@smokerstore.de](mailto:info@smokerstore.de)  
Tel.: +49 (0)2336 / 933599-0  
Fax: +49 (0)2336 / 4744870



## 1. PRODUCT DESCRIPTION

### SCOPE OF DELIVERY

1x Taifun® GX 2.0 ml	1x Allen Key 1,3 mm
1x Drip Tip	1x Allen Key 2,0 mm
1x Mesh Stripes	1x Manual
1x Spare Parts Bag	

### SPECIFICATIONS

Dimensions:	33,5 x 23,0 mm	Weight:	~ 56,3 g
Thread:	S10	Capacity:	2,0 ml
Material:	Stainless Steel (1.4301) / Borosilicate Glass / PEEK / POM		



## 2. SAFETY INSTRUCTIONS

- Do not expose the device to extreme temperatures; Avoid exposure to direct sunlight and high humidity.
- Do not use the device in an environment that is enriched with flammable gases, vapors or dusts; There is a danger of explosion!
- Do not drop, throw, or apply excessive force to the device to prevent damage; Do not use the device if you detect damage.
- Refill the liquid early to prevent dry hit.
- The device heats up during use; give it time to cool down again.
- Change the cotton, if you change the flavour.
- Clean the device regularly, as condensate and dirt may settle.
- Make sure that the mod that you use with the device is capable of performance; use of mods without protection is not recommended.

## 3. MANUFACTURER RECOMMENDATIONS

- The resistance of the used coil should not be less than 0.3 Ohms.
- Adjust the power of your mod to an appropriate level, depending on the used coil.

## 4. STORAGE INSTRUCTIONS

- If you don't use the device for an extended period of time, close the airflow control or empty the tank, remove the cotton and clean the device.
- Keep the device out of the reach of children and pets.
- Ensure that the device is firmly and securely in place.
- Store the device clean and dry; avoid high humidity.
- Do not store the device under extreme temperatures; avoid exposure to direct sunlight.

## 5. DISPOSAL NOTICE

- The packaging must be disposed of in an environmentally friendly manner.
- Products marked with the crossed out bin, do not belong in the trash. These products can be disposed of free of charge in your local trade or at community collection points. Check with your local council, town hall or local waste management company.

### AUTHENTICITY VALIDATION

You can check the authenticity of your Taifun product at [www.taifun-check.com](http://www.taifun-check.com). You can find the verification code and the serial number on your device: 12345678911-1234 (verification code - serial number)

## 6. PRODUCT OVERVIEW

### COMPONENT OVERVIEW

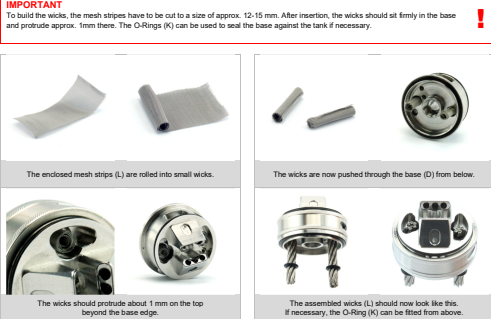


### IMPORTANT

The device is delivered fully assembled. All O-Rings and isolators are already installed correctly. This list is only for illustration and possible assembly after clearing the individual parts. A stainless steel ball is attached to the base (D). It is used to snap the MF Ring into the respective positions. This ball must not be removed (even when cleaning).

## 7. START UP

### ATTACHING THE MESH STRIPS



### ATTACHING A COIL



### INSERT COTTON

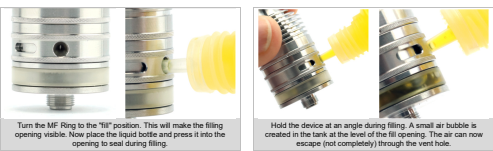


### LOWER COTTON CHAMBER OF BASE

The base has its own cotton chamber. This serves as an additional buffer and prevent over-saturation of the upper cotton chamber. The amount of cotton needed, depends on the type of use. Especially with more fluid liquids and a higher underpressure (due to the preferred puff behavior) it makes sense to restrict the ventilation of the tank and to use more cotton (the cotton should not protrude beyond the edge of the chamber).



### FILLING THE TANK



### WARNING

- Always make sure that the tank is filled sufficiently to avoid dry hit.
- Make sure that no liquid gets on your skin, otherwise wash these areas thoroughly.
- When the tank is overfilled, liquid can escape from the vent hole and lead to permanent liquid moisture on the MF Ring.

### ADJUSTING THE MF RING / VENTILATION

The MF ring has several positions that serve to place. On the inside of the MF ring there are grooves that serve for ventilation when vaping and ventilation of the tank when filling. Two different settings for vaping are possible with additional tank ventilation and without.

Depending on the liquid, the power used and your own puff behavior, adjustment via the MF ring is possible. With a higher VG content of the liquid and / or higher performance, the tank must be ventilated via the ring. To do this, turn the ring clockwise (starting from the closed position). When the deck airflow is opened to the maximum, the ring stops here (the ring does not snap into place) and the symbol for tank ventilation ON is visible in the circular recess (O).

External ventilation of the tank is guaranteed even with limited airflow. Especially with higher draw resistances (via optional air disks) and / or the use of classic liquids (50/50 or higher PG content) it may be necessary to switch off the external ventilation of the tank. The ventilation of the tank via the wicks may be sufficient and additional external ventilation could lead to liquid moisture on the ring and to over-saturation of the upper chamber. For this purpose, the ring is turned counterclockwise over the filling hole. When the deck airflow is opened to the maximum, the ring snaps into place and the symbol for tank ventilation OFF is visible in the circular recess (X).

In order to restrict the deck airflow, the ring must be rotated further counter-clockwise until it stops (the ring then does not snap into place). Only then the external ventilation of the tank is excluded, even with limited airflow regulation. The choice of the MF Ring setting depends on your own requirements. However, it can be said that if the draw resistance is preferably low with high VG liquid and higher power, the ring is turned clockwise to the stop and with higher draw resistance with PG liquid and lower power, the ring is turned counterclockwise. Please also note chapter 7 on page 5 of the operating instructions (inserting the cotton wool).

Alternatively, an optional base with enlarged holes for increased ventilation and easier filling with very high VG-containing liquids is available separately. This base has a simplified setting option and offers no option to switch off the external tank ventilation during operation. With the optional base the ring cannot be turned counterclockwise over the filling opening.

**IMPORTANT**  
The MF Ring is not a classic AFC Ring for air flow control. The airflow can be regulated to a limited extent via the MF Ring, but the actual airflow regulation takes place via the Air Disk used in the Deck.



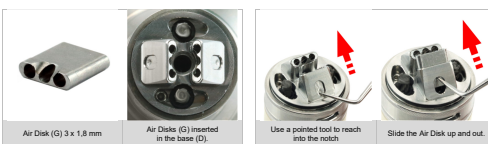
### OPTIONAL (ADDITIONAL) VENTILATION

Some setups require additional ventilation, for example for extreme performance. In this case the hexagon socket screw located in the Deck can be removed. However, removal means that the atomizer may no longer be able to be stored lying down.

### AIR FLOW REGULATION VIA AIR DISK

The air flow is controlled by the Air Disks installed in the base. They regulate and center the airflow directly to the coil. Air Disks with 3 x 1.8 mm holes are included in the scope of delivery. For more or lesser restrictive drawing resistance, optional Air Disks are available from retailers. To remove the Air Disk (e.g. when changing), it is recommended to reach into the small notch on the outside with a pointed tool and slide the Air Disk up and out.

The device can also be used without the Air Disks, which results in a comparatively lesser drawing resistance.



### 8. CLEANING

Do not use cleaning agents as they could harm the O-Rings.

Before assembling, check the completeness and positioning of the O-Rings to prevent leakage of liquid.

- Disassemble the device into its components.
- Clean the components (not the cotton) with warm water or in an ultrasonic bath.
- Completely dry the components before reassembling the device.

### 9. MAINTENANCE

- Wait until the device has completely cooled down before disassembling, to prevent burns.
- Make sure that there is no power supply by unscrewing the device from the mod or by switching off the mod.

### ASSEMBLY DEVICE

- The device is usually delivered fully assembled, the following instructions are for the assembly after cleaning.
- Moistening the sealing rings with liquid makes the assembly easier.
- Please use only suitable tools for assembly.



### REPLACING THE TANK GLASS

If the Tank Glass is damaged or broken, it must be replaced.

- Only use original spare parts, which can be obtained directly from [www.smokerstore.de](http://www.smokerstore.de) or from authorized dealers.
- Before replacing the Tank Glass, the atomizer must be completely emptied.

### REPLACING SEALING RINGS

Sealing rings are used to seal the device.

- If you notice liquid or moisture leaking out of the device, the cause may be brittle seal rings that need to be replaced.
- Moistening the sealing rings with liquid makes the assembly easier.

A comprehensive guide can be downloaded online at [www.smokerstore.de](http://www.smokerstore.de) as a PDF. See also QR code on page 1 of this manual.

If you have further questions about attaching a coil and the individual settings of the device, please contact your SmokerStore dealer or the SmokerStore service.

