

Instructions

Please read the following instructions carefully before using the product and keep them for future needs.

1. Usage and storage instructions

Do not expose the product to humid environments or extreme temperatures, it could be damaged. If water enters by accident, stop the operation to prevent a short circuit. Do not use our product more often or for a longer period than traditional cigarettes. Keep the product out of the reach of children, adolescents and pets.

2. Contraindications

When using liquids with and without nicotine: Please note the warnings and instructions for use of the liquid products and do not mix them with other substances. Do not use the product if you have a known problem with nicotine or other liquid ingredients. In case of nausea, dizziness or rash, discontinue use and consult a medic immediately. The electronic cigarette is not for smoking cessation.

3. Warnings

Delivery to and use by children and adolescents under the age of 18 is prohibited. The product is not recommended for non-smokers.

This product is not suitable for pregnant women, women who are breastfeeding, people with cardiovascular and respiratory diseases, alcoholics and epileptics. Do not use the product if you have lung disease (such as asthma, COPD, bronchitis, pneumonia). The released vapor may cause an asthma attack, shortness of breath and coughing fits in the case of a previously damaged lung. If complaints occur, please seek medical attention immediately. Do not use our product if you have a known problem (allergies, intolerances, etc.) with nicotine or other ingredients of our product. Since the product contains glycerol, it can lead to hyperglycaemia or glucosuria in diabetics.

When using nicotine-containing liquids: nicotine-containing products are not suitable for people who, for medical reasons, should abstain from nicotine products. If the liquid is swallowed, contact the emergency number. You can also contact the poison emergency service in your area.

4. Information on possible adverse health effects

- none known, see the instructions of the liquid.

5. Information on addictive effects

If you use products containing nicotine, the following warning is displayed on the packaging of the liquids: "This product contains nicotine: a substance that is highly addictive."

6. Information on toxicological data

Overheating the liquid (over 240 ° C) in the electronic cigarette may cause toxicological substances. Please use the electronic cigarette according to the manufacturer's recommendation and operating instructions. The use of this product is at your own risk.

7. Contact

If you need additional information or if you have questions about the products and their use, please contact our local shops or visit our website: www.smokerstore.de

Manufacturer:

SmokerStore GmbH,
Eisenwerkstraße 26,
58332 Schwelm, Deutschland
Email: info@smokerstore.de
Tel.: +49 (0)2336 / 935899-0
Fax: +49 (0)2336 / 4744870

1. PRODUCT DESCRIPTION

SCOPE OF DELIVERY

- 1x Taifun® GT4
- 1x mouthpiece
- 1x spare parts bag
- 1x user manual
- 1x card for authenticity verification



SPECIFICATIONS

Dimensions:	25 x 60 mm	Weight:	~ 100 g
Thread:	510	Fassungsvermögen:	~ 5 ml
Material:	Stainless steel (1.4301) / Borosilicate glass / POM / PEEK		

2. SAFETY INSTRUCTIONS

- Do not expose the device to extreme temperatures; Avoid exposure to direct sunlight and high humidity.
- Do not use the device in an environment that is enriched with flammable gases, vapors or dusts; There is a danger of explosion!
- Do not drop, throw, or apply excessive force to the device to prevent damage; Do not use the device if you detect damage.
- Refill the liquid early to prevent dry hit.
- The device heats up during use; Give it time to cool down again.
- Change the cotton if you change the flavour.
- Clean the device regularly, as condensate and dirt may settle.
- Make sure that the mod that you use with the device is capable of performance; Use of unregulated mods or mods without protection is not recommended.

3. MANUFACTURER RECOMMENDATIONS

- The resistance of the used coil should not be less than 0.3 Ohms.
- Adjust the power of your mod to an appropriate level, depending on the used coil.

4. STORAGE INSTRUCTIONS

- If you don't use the device for an extended period of time, close the airflow control or empty the tank, remove the cotton and clean the device.
- Keep the device out of the reach of children and pets.
- Ensure that the device is firmly and securely in place.
- Store the device clean and dry; Avoid high humidity.
- Do not store the device under extreme temperatures; Avoid exposure to direct sunlight.

5. DISPOSAL NOTICE

- The packaging must be disposed of in an environmentally friendly manner.
- Products marked with the crossed out bin, do not belong in the trash. These products can be disposed of free of charge in your local trade or at community collection points. Check with your local council, town hall or local waste management company.

6. PRODUCT OVERVIEW

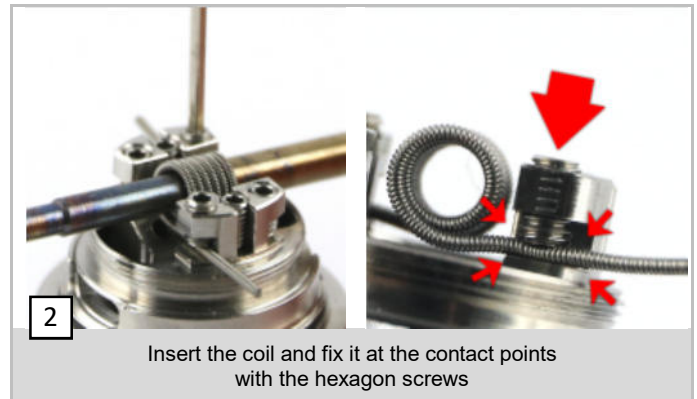
COMPONENT OVERVIEW



- | | | |
|------------------------------------|----------------------------|----------------------------|
| 1 Base/Deck | 9 O-ring (NBR 70 17x1 mm) | 17 Chamber/Chimney |
| 2 Positive pole | 10 Aircontrol-ring (AFC) | 18 Top cap |
| 3 Positive pole insulator | 11 Positive pole screw | 19 O-ring (NBR 70 17x1 mm) |
| 4 Hexagon socket screws (M2,5x4mm) | 12 Insulator | 20 O-ring (NBR 70 8x1 mm) |
| 5 Hexagon socket screws (M2x3mm) | 13 Glass tank | 21 Drip tip |
| 6 O-ring (NBR 70 19x1 mm) | 14 Tank cover | 22 O-rings (NBR 70 5x1) |
| 7 O-ring (NBR 50 15x1 mm) | 15 O-ring (NBR 70 22x1 mm) | |
| 8 Liquidcontrol-ring (LC) | 16 O-ring (NBR 70 21x1 mm) | |

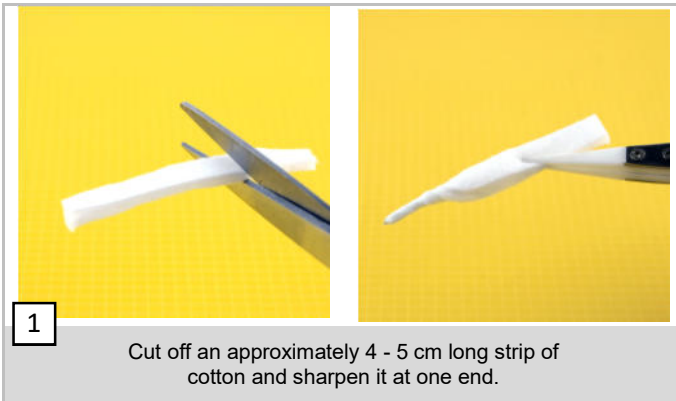
7. START UP

ATTACHING A COIL



- !** **WARNING**
- Use an ohm meter to check the resistance of the coil/device before using it. Don't use the device, if a short circuit is detected. This could lead to battery damage. Check if there is a contact between the coil ends and surrounding parts.

INSERT COTTON



1 Cut off an approximately 4 - 5 cm long strip of cotton and sharpen it at one end.



2 Now pull the cotton through the coil and push the cotton ends into the pockets.



3 The cotton should cover the liquid openings well from the inside.



Moisten the cotton with liquid and screw the tank section onto the base.

FILLING THE TANK



1 Before you fill the tank, the liquidcontrol should be closed (liquid holes covered).



2 To fill, unscrew the top cap partially or completely.



3 Now the top cap is screwed on again.



The liquidcontrol has to be opened again, before using.

! **WARNING**

- Always make sure that the tank is filled sufficiently to avoid dry hit.
- Make sure that no liquid gets on your skin, otherwise wash these areas thoroughly.

ADJUST AIRFLOW CONTROL

The air control can be adjusted via the lower ring. There are two air vents in the base and 3 holes in the AFC ring, which can be pushed all the way or partially over the openings of the base by a lateral movement.

This gives you the opportunity to open one or two air holes.



WARNING

- Never vape with completely closed airflow control.
- Make sure there is sufficient air supply at higher wattage levels.

8. CLEANING

Do not use cleaning agents as they could harm the o-rings.

Before assembling, check the completeness and positioning of the o-rings to prevent leakage of liquid.

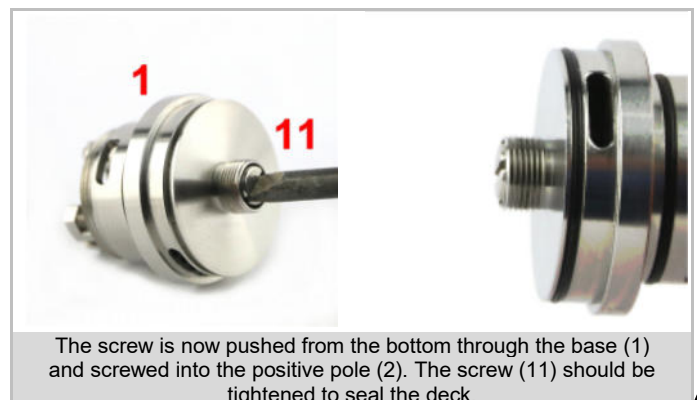
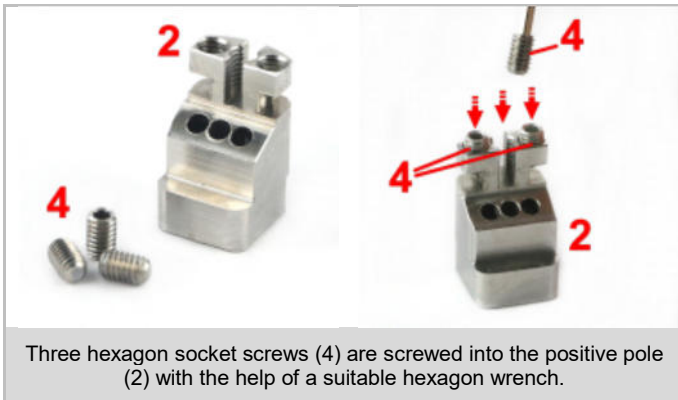
- Disassemble the device into its components.
- Clean the components (not the cotton) with warm water or in an ultrasonic bath.
- Completely dry the components before reassembling the device.

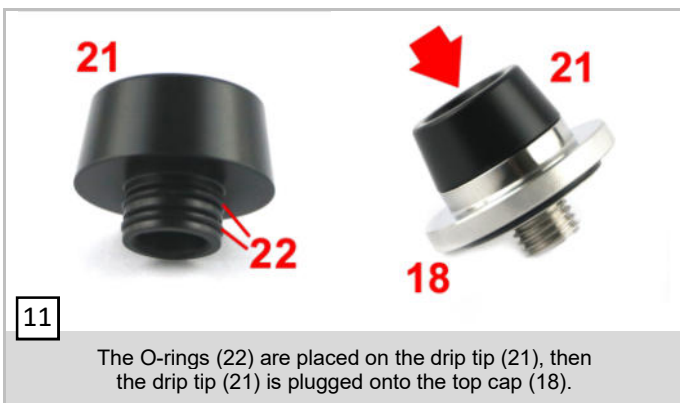
9. MAINTANANCE

- Wait until the device has completely cooled down before disassembling, to prevent burns.
- Make sure that there is no power supply by unscrewing the device from the mod or by switching off the mod.

ASSEMBLING DEVICE

- The device is usually delivered fully assembled, the following instructions are for the assembly after cleaning.
- Moistening the sealing rings with liquid makes the assembly easier.

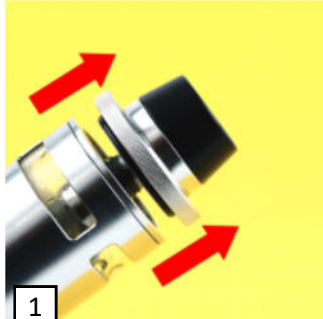




REPLACING THE GLAS

If the glass is damaged or broken, it must be replaced.

- Only use original spare parts, which can be obtained directly from www.smokerstore.de or from authorized dealers.
- Before replacing the glass tank, the evaporator must be completely emptied.
- After changing the glass, the tank section must be screwed together again to ensure the tightness of the tank.



1

First, unscrew the top cap from the tank.

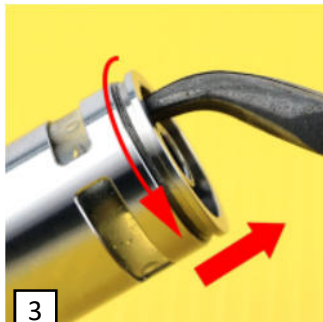


Now the tank is screwd off the base.



WARNING

- If the glass is broken, glass splinters may be in the tank and in the cotton. Immediately stop vaping, thoroughly clean the entire device, and replace the sealing rings and cotton according to the maintenance instructions.



3

Grab the upper tank cap and ..



4

... unscrew it.



Now the glass can be replaced.

REPLACING SEALING RINGS

Sealing rings are used to seal the device.

- If you notice liquid or moisture leaking out of the device, the cause may be brittle seal rings that need to be replaced.
- Moistening the sealing rings with liquid makes the assembly easier.

INFO

A more comprehensive user guide can be downloaded at www.smokerstore.de as PDF.